

# Let the Clone Wars Begin!

For this activity, you will learn how to use the Clone Stamp tool. Remember, cloning is a common technique used to cover-up or hide parts of an image and is commonly used in the advertising world to make people, products and locations look more desirable.

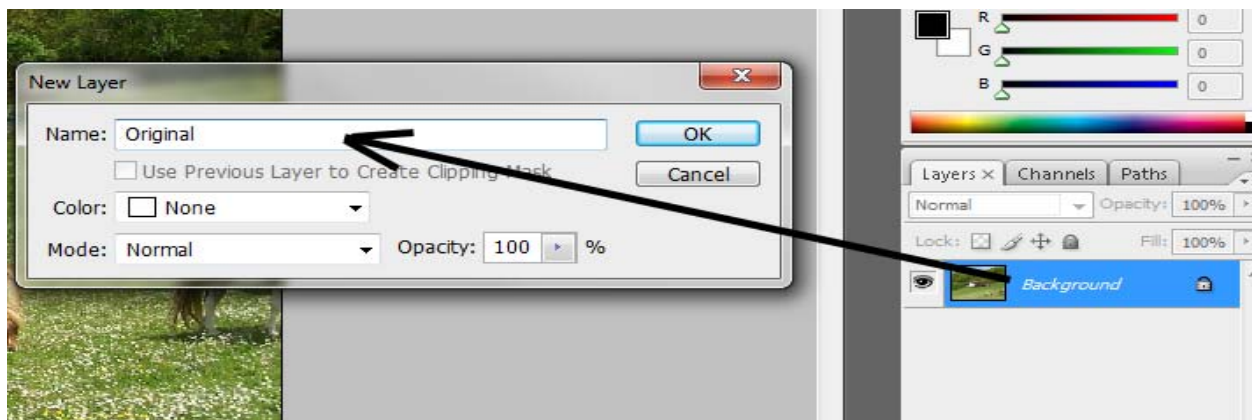
So...how can I change something like this:



into this:

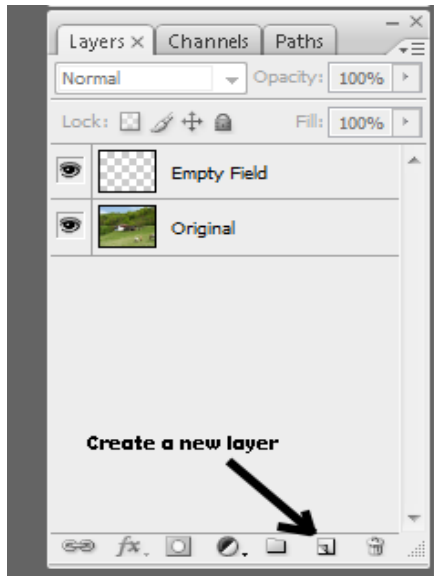


To start, double click on the background layer and rename it original. This will help you keep your layers in order. ALWAYS name your layers before doing anything to them!



# Let the Clone Wars Begin!

Next, create a new layer. To do this, you will select the New Layers option at the bottom of the layers palette. Then name your layer something that helps keep the information in order. I named mine Empty Field. This is where you are going to work.



Remember, you never want to alter your original information. Doing so makes it harder to return to an earlier state of your image if your employer wants you to do so, adding unnecessary work for you.

As mentioned before, the tool we will be using for this activity is the Clone Stamp. It looks like this in your toolbox:



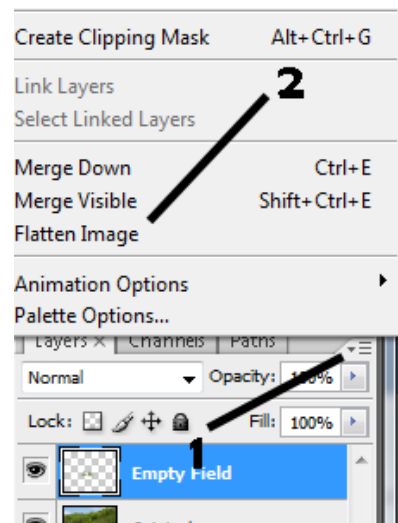
To use this tool, you must first set up where you intend to clone from. Click on the Clone Stamp tool, then select your original layer. Select a spot in the image you want to clone and hold down the alt key. When you press the alt key, you will notice the cursor change to a small bullseye. When you click the left mouse button, you will select the area you intend to clone. Once selected, you can move back to your newly created layer and begin using the Clone Stamp to duplicate the area you selected:



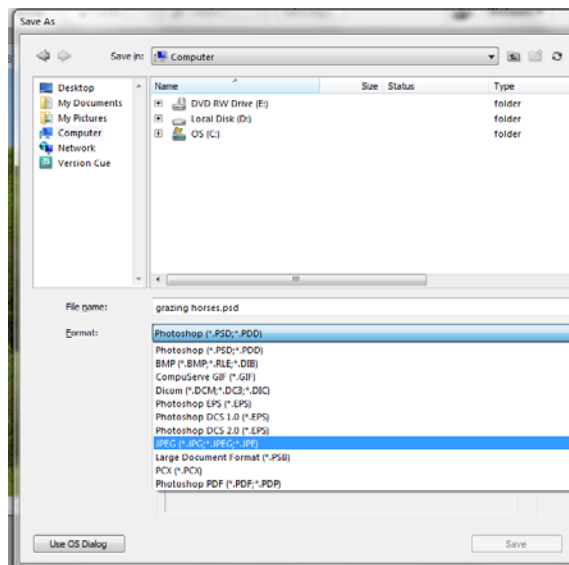
# Let the Clone Wars Begin!

Notice as you work there is a small crosshair following your cursor. This is to show you where you are taking your clone sample from in the graphic. You will have to recreate your selection a number of times to make your clone look realistic. You can change the size of your brush to make the job go faster, but you have to be careful not to make it too large or you will grab too much at a time and make it look manipulated. Also, remember to use a soft brush to make the edges flow together more nicely. Remember, the goal is to make your image look realistic!

Remember to save your image as a Photoshop document (.psd) when you are finished. Next, you will create a useable image from your work. To do this, you need to start by flattening your image. **WARNING:** Never save your flattened image as a PSD file! You will lose your individual layers and editing ability if you do so! To flatten your image, you will select the layer dropdown menu first, then select Flatten Image:



This will take all the changes you made and compress them onto a single, locked layer named Background.



Here's the final step of your clone wars! Select File – Save As. Give your file a name. Change the Format to JPEG (.jpg) using the dropdown menu. Make sure you are in your server folder where these instructions are located and click Save.

You have just completed your first cloning. Congratulations!